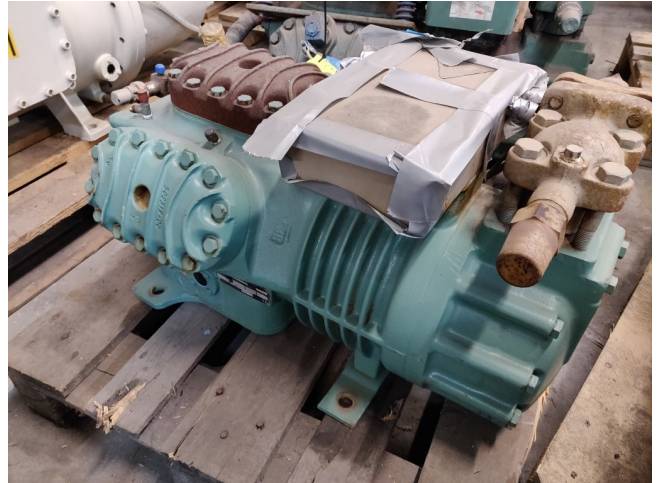


Bitzer 6H-35.2

Specifications

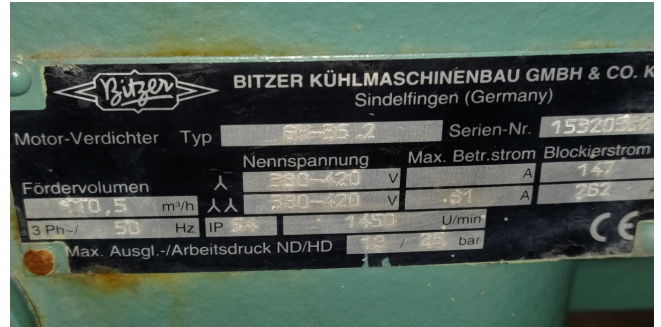
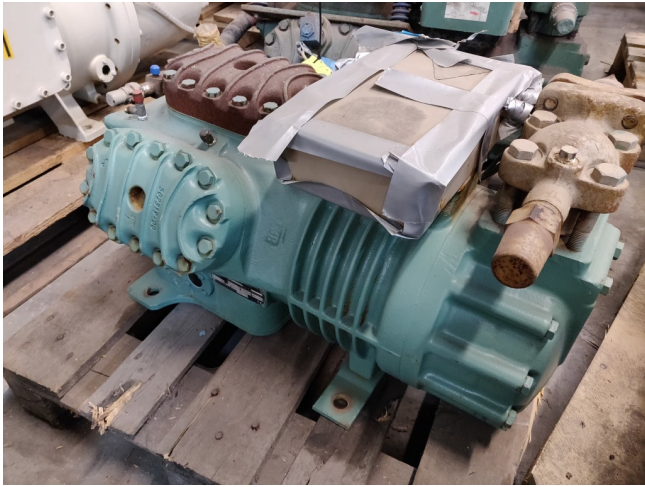
Marka	Bitzer
Typ	6H-35.2
Czynnik chłodzący	Freon
Refrigerant type	R 404 A or other types
kW at 0°C/+40°C	89.2
kW at -5°C/+40°C	74
kW at -10°C/+40°C	60.9
kW at -20°C/+40°C	39.5
kW at -30°C/+40°C	23.8
Stock	1




Description

Used Bitzer 6H-35.2

Used but in good condition Bitzer 6H-35.2 Semi-hermetic Reciprocating Compressor. Our capacity table is based on the used type of Freon. You can also use these compressors on alternative types of Freon. For all the other specs (if available), see the picture of the manufacturer model plate or the attached pdf file. *Why choose for HOSBV? We're not only the largest used refrigeration specialist in Europe, but also, we deliver all equipment including an extensive test, warranty and industrial cleaning. *Optional we can arrange the logistics.




 BITZER Software v6.10.2 rev2250 08.10.2019 / All data subject to change. 1 / 4

Selection: Semi-hermetic Reciprocating Compressors

Input Values

Compressor model: **4N-20.2V**
 Mode: Refrigeration and Air conditioning
 Refrigerant: R404A
 Reference temperature: 20.00 °C
 Reference temperature: 20.00 °C
 Liq. subc. (in condenser): Dew point temp. 0 °K
 Power supply: 400V-3-50Hz
 Capacity control: 100%
 Useful superheat: 100%

Result

Q [W]: Cooling capacity
 Q_{ev} [W]: Evaporator capacity
 P [kW]: Power input
 I [A]: Current
 Q_c [W]: Condenser Capacity (w. HX)
 COP [-]: COP [-]
 m [kg/h]: Mass flow
 th [°C]: Operating mode
 COPIER: COPIER
 Mass flow: Mass flow
 Operating mode: Operating mode
 Discharge gas temp. w/o cooling: Discharge gas temp. w/o cooling

ic	to	8°C	9°C	4°C	-10°C	-15°C	-20°C	-25°C	-30°C
30°C	Q [W]	63606	53277	44316	36552	29842	24067	19121	14913
	Q _{ev} [W]	63606	53277	44316	36552	29842	24067	19121	14913
	P [kW]	12.20	11.68	11.13	10.53	9.86	9.12	8.29	7.36
	I [A]	21.5	20.8	19.99	19.19	18.33	17.41	16.42	15.38
	Q _c [W]	75200	64375	54888	46551	39211	32733	27000	21903
	COP [-]	5.21	4.56	3.98	3.47	3.03	2.64	2.31	2.03
	m [kg/h]	1640	1354	1113	909	736	589	468	361
	Op.	Standard	Standard	Standard	Standard	Standard	Standard	Standard	Standard
	th [°C]	57.0	62.6	68.6	75.1	82.2	90.1	98.6	107.7
	40°C	Q [W]	54802	45648	38066	31289	25434	20390	16071
Q _{ev} [W]		54802	45648	38066	31289	25434	20390	16071	12398
P [kW]		14.11	13.42	12.66	11.81	10.89	9.91	8.87	7.77
I [A]		24.2	23.2	22.1	20.9	19.68	18.39	17.10	15.83
Q _c [W]		60207	58601	56079	42509	35783	29806	24496	19781
COP [-]		3.88	3.42	3.01	2.65	2.33	2.06	1.81	1.60
m [kg/h]		1597	1315	1077	876	705	561	439	337
Op.		Standard	Standard	Standard	Standard	Standard	Standard	Standard	Standard
th [°C]		66.7	72.6	78.9	85.6	92.9	100.9	109.6	119.6
50°C		Q [W]	44845	37508	31089	25496	20945	16459	12871
	Q _{ev} [W]	44845	37508	31089	25496	20945	16459	12871	9820
	P [kW]	16.05	15.21	14.24	13.16	11.98	10.73	9.42	8.09
	I [A]	27.2	25.9	24.4	22.8	21.2	19.48	17.73	16.19
	Q _c [W]	60094	51959	44618	37995	32024	26650	21824	17503
	COP [-]	2.79	2.47	2.18	1.94	1.72	1.53	1.37	1.21
	m [kg/h]	1521	1249	1020	825	661	522	405	307
	Op.	Standard	Standard	Standard	Standard	Standard	Standard	Standard	Standard
	th [°C]	77.8	84.1	90.8	97.9	105.6	114.0	123.1	133.3

-- No calculation possible (see message in single point selection)
 *According to EN12900 (20 °C suction gas temp., 0K liquid subcooling)

Application Limits 100% 4N-20.2